

# Cable Chat



## What's On TV?

### Showtime Showcase...Chnl 354

Features the best Showtime Original Pictures and Series every day, especially during prime time, plus Hollywood hits—all uncut and commercial-free.

### Food Network...Channel 46

Programming focuses on cooking, food preparation, healthy eating, at-home entertaining and restaurants.

### C-Span 2...Channel 6

Live coverage of the U.S. Senate and BOOK TV—48 hours of book programming each weekend including children's books, history, biography, business of books and encore Booknotes.

### Gospel Music Chnl...Chnl 238

Christian music video channel featuring all types of Christian music, from country to metal to hip-hop.

### truTV...Channel 249

The network where the word *Actuality* comes alive and the real stories would happen even if the cameras weren't rolling.

## Contact Us

2193 NC 99 Hwy South  
P O Box 520  
Belhaven, NC 27810

### Hours

Monday-Friday  
8:00 a.m.-4:30 p.m.

### Phone

252.964.8000  
252.927.8000

### Fax

252.964.2211

### Email

Questions@goTriCounty.com

### On The Web

www.goTriCounty.com  
www.goTriCounty.biz

### Time-Temperature-Weather

252.927.2000

### Call Before You Dig

811

## Temperature Inversion Affects TV Signals

An atmospheric event known as temperature inversion caused loss of local network signals on Monday morning, April 27. The inversion affected cable systems and roof-top antennas across the entire south-eastern United States.

Temperature inversion occurs when a layer of warmer air forms above a layer of cooler air, reversing the normal altitudinal trend and interfering with the beams' path. This often happens on calm, clear nights within areas of high-pressure; after sunset, the ground begins to lose heat quickly, cooling the near surface air, while subsiding air aloft (associated with the high) warms as it sinks, eventually forming a relatively stable blanket atop the cooler air below.

Very high frequency (VHF—30 to 300 MHz) radio waves (being part of the electromagnetic spectrum, like light) and sometimes TV broadcasts can be refracted by such inversions. This is why it is possible to sometimes hear FM radio or watch VHF-LO band TV broadcasts from otherwise impossible distances as far as a few hundred miles distant on foggy nights. The signal, still powerful enough to be received even at hundreds or rarely, thousands, of miles, would normally be refracted up and away from the ground-based antenna, is instead refracted down towards the earth by the temperature-inversion boundary layer. This phenomenon is called tropospheric ducting. It is also referred to as skip by small radio operators and Ham operators. To the radio amateur or DX enthusiast, this is an exciting phenomenon, but to the ordinary TV viewer or FM listener it can be a nightmare—video and/or audio ruined by co-channel or adjacent-channel interference.

This type of inversion can happen at any time of the year but is more common in the spring and fall.

## What's New On TV In June...

**G4** (channel 263), the hottest TV destination for young guys hooked on tech gadgets, pop culture, video games, movies and everything in between, takes viewers to Japan for *Ninja Fest 4* to prepare for the obstacles and challenges of the Ninja Warrior course—premieres June 21, along with live coverage of the biggest live gaming event of the year: *E3: Electronic Entertainment Expo*, June 2-4.



GOLF CHANNEL

**Golf Channel** (channel 286) continues its coverage of the PGA Tour and its tradition of being the best go-to source for viewers to find all things golf. *Golf in America*, an original series that goes coast to coast to take a look at golf in the lives of everyday Americans, premieres June 21. *U.S. Open Week on Golf Channel* takes viewers inside the ropes at Bethpage Black Golf Course with live news, reports, inside analysis and compelling features all week long from the PGA TOUR's second men's major championship for 2009, June 15-21, live from New York.

## TV Trivia

1. What U.S. president refused to use the telephone while in office?
2. What does Don Corleone have in his mouth when he dies in *The Godfather*?
3. What James Bond film features Christopher Walken as billionaire industrialist Max Zorin?
4. What feature helps you find your favorite programs without channel surfing?
5. What year boasted the first woman in space?

See answers below

## Feature Presentation

**Parental Locks** allow you to restrict viewing of TV programming based on your viewing preferences. Set a personalized 4-digit PIN and you can place Locks on selected ratings, channels and titles. You can also hide adult titles from being displayed on screen.

Set and change your **Parental Locks PIN** in **PINs Setup**. Using your cable receiver remote control:

- Press **Menu** twice
- Select **Setup**
- Select **PINs Setup**
- Follow the on-screen prompts to setup, clear or change your **PIN**

Set Locks by using the lock icon on an information screen, by going to **Parental Controls** from the Main Menu or select **Setup** from the Main Menu, then **Locks Setup**. Use the arrow keys to make your selections, then press **OK** to confirm each setting.

## What's the Answer?

1. Calvin Coolidge
2. An orange
3. "A View To Kill"
4. On-screen TV Guide
5. 1963; Valentina Vladimirovna Tereshkova in Vostok 6 (U.S.S.R.)

## Pay-Per-Views Coming In June

- > WWE : Great American Bash > Valkyrie
- > My Bloody Valentine > TNA: Slammiversary
- > UFC 99: The Comeback > New In Town
- > The Curious Case of Benjamin Button > Taken
- > WWE: Extreme Rules > World Cup Soccer



## TriCounty Telecom DVR Service

Only  
\$9.95 per month

## Broadcast Digital Transition Set For June 12

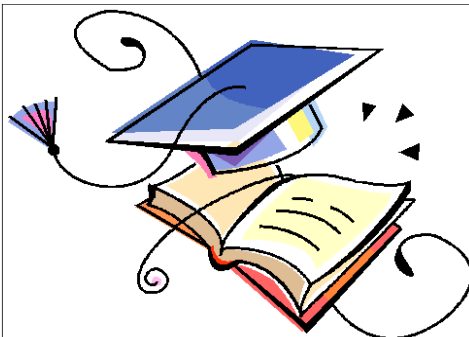
The nationwide switch to digital television broadcasting will be completed on June 12, 2009, but some local television stations may switch sooner. Local broadcast networks serving our viewing area have indicated they will not switch from analog to digital until June 12.

After the switch, analog-only television sets that receive TV programming through an antenna or rabbit ears will need a converter box to continue to receive over-the-air TV.

Since TriCounty Telecom has converted to all digital and you have connected our digital receiver to your TV(s), no change is required. It will not be necessary for you to purchase a new TV. Analog-only TVs should continue to work as before to receive low-power, Class A or translator TV stations and with gaming consoles, VCRs, DVD players and similar products.

The federal government is offering discount coupons for viewers who need to purchase converter boxes for analog TV sets connected to antennas or rabbit ears. **Note: These coupons are for analog TVs connected to antennas/rabbit ears, not TriCounty Telecom Cable TV service.** Information about the DTV transition is available from your local television stations, [www.DTV.gov](http://www.DTV.gov), 1-888-CALL-FCC (TTY 1-888-TELL-FCC), or by contacting TriCounty Telecom at 252-964-8000 or [www.gotricounty.biz/cabletv-hdtv.htm](http://www.gotricounty.biz/cabletv-hdtv.htm). For discount coupons, visit [www.dtv2009.gov](http://www.dtv2009.gov) or call 1-888-DTV-2009 (TTY 1-877-530-2634).

*TriCounty Telecom is required by the Federal Communications Commission (FCC) to provide this notice to our customers monthly through June 2009*



*Congratulations  
Class of 2009*



## Weather

Daily & weekly weather forecast at a glance on TriCounty Digital CATV. Press Menu twice on your remote control and arrow down to Local Weather.